

BUILD-TO-PRINT PRODUCTION CAPABILITY

APPROVALS

BS EN ISO 9001; MIL 2000 Capabilities.

ENVIRONMENT

Static controlled, air conditioned.

SURFACE MOUNT TECHNOLOGY

Prototype through to volume production.
0402 through to PLCC, QFPs.
Semi-Automatic Screen Printing
IR / Convection Reflow Ovens

THROUGH-HOLE TECHNOLOGY

Prototype/hand assembly.
Medium batch laser placement.
Tube and bandolier systems.
Laser placement, crop and bend

TECHNIQUES

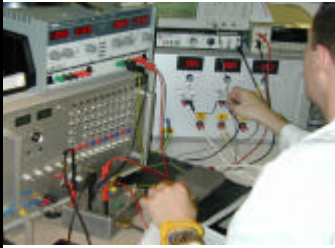
Multi-stage aqueous cleaning.
Auto-lead cropping.
Wire wrapping facility.
Back plane press fit assembly.
Cable loom and cabinet wiring.
Through-hole hand soldering.
Through-hole wave soldering.
Programmable flow-solder oven.
Component preparation and encapsulation.
Full conformal coating facilities.
Vacuum impregnation facilities.
Toroidal and RM series winding.
Full CNC, milling, turning capabilities.
Final assembly and product packaging.
Full procurement and materials management.
Total turnkey solutions offered.

TESTING

Custom ATE systems.
SMD microscopic inspection.
In-circuit emulation, PC routines.
Burn-in and environmental testing.
UV coating inspection facilities.
Sinusoidal, bump and shock vibration.
Simulated altitude pressure chamber.
EMC Chamber
Combined Thermal and Vibration testing

RE-WORK

IC and connector removal, hot air SMT station.



XCEL Power Systems Ltd

Brunswick Rd, Cobbs Wood, Ashford, Kent, UK TN23 1EH
Tel +44 (0) 1233 623404 Fax +44 (0) 1233 641777
Email: sales@xcelpower.demon.co.uk
www.xcelpower.com